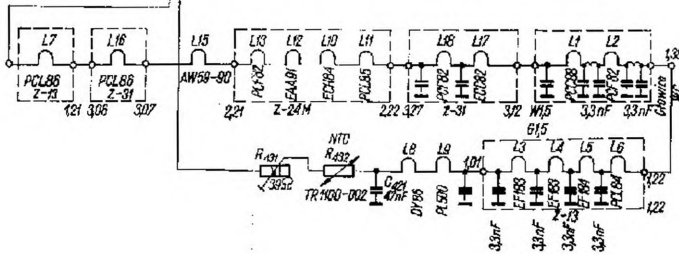
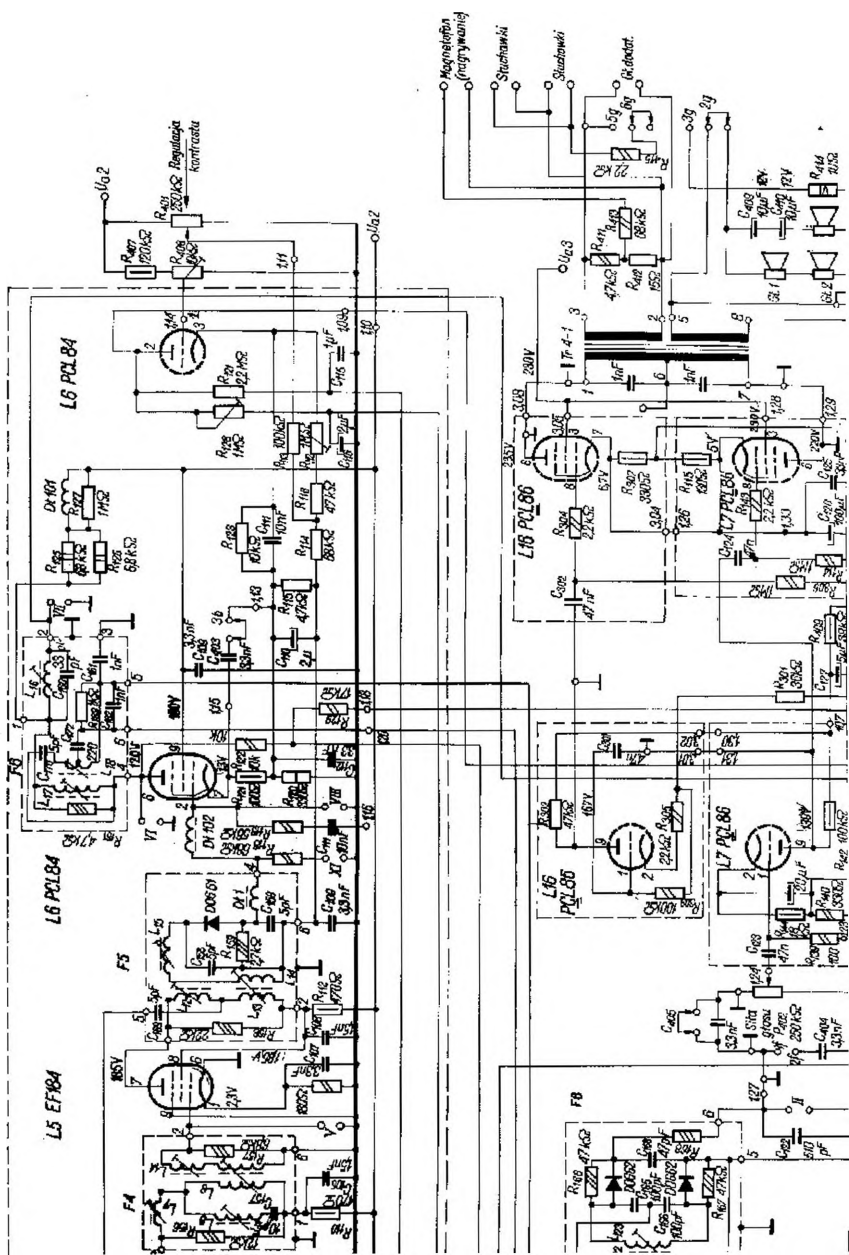


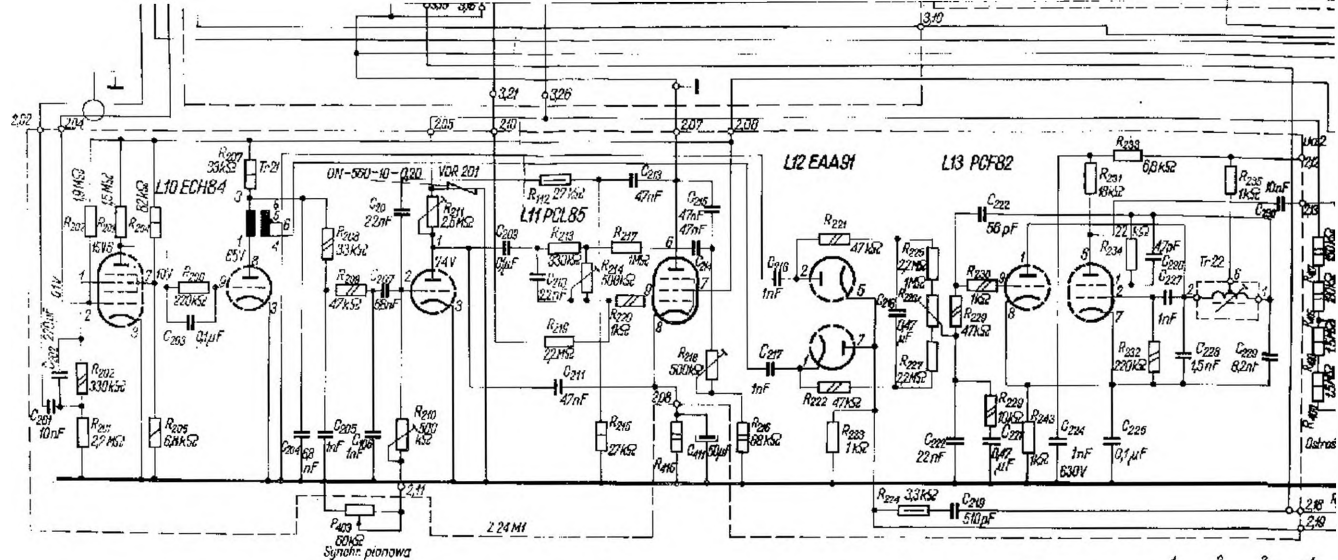
Objasnienie znaków

- 0,05 W
- 0,125
- 0,5 W
- 0,25 V
- 1 W
- 2 W
- 3 W
- 6 W
- 12 W



odbiornika klasy L „Opal”





	1	2	3	4
Swi:	240	[Diagrammatic switch symbol]		
Wyg. plamki	[Diagrammatic symbol]	[Diagrammatic symbol]		
Film	[Diagrammatic symbol]	[Diagrammatic symbol]		
Tony wysokie	[Diagrammatic symbol]	[Diagrammatic symbol]		
Tony niskie	[Diagrammatic symbol]	[Diagrammatic symbol]		
Sluchawki	[Diagrammatic symbol]	[Diagrammatic symbol]		
TV i V pasmo	UHF	[Diagrammatic symbol]		
I, II i III pasmo	VHF	[Diagrammatic symbol]		

Rys. D-12. Schemat zunifikowane