

Or, Call Customer Service at 1-800-548-6132 (USA Only)



XTR501

PRELIMINARY INFORMATION
SUBJECT TO CHANGE
WITHOUT NOTICE

HIGH CURRENT BRIDGE DRIVER and 4-20mA Transmitter

FEATURES

- SENSOR EXCITATION OF 1W
- VARIABLE EXCITATION VOLTAGE:
1.5V to 5.0V
- SINGLE SUPPLY: 11.4V to 30VDC
- INRUSH CURRENT LIMITING
- 4-20mA TRANSMITTER

APPLICATIONS

- GAS DETECTION SENSORS
- PELLISTOR CATALYTIC DETECTORS
- STRAIN GAGES
- HIGH CURRENT BRIDGES
- LOAD CELLS
- HOT-WIRE ANEMOMETERS

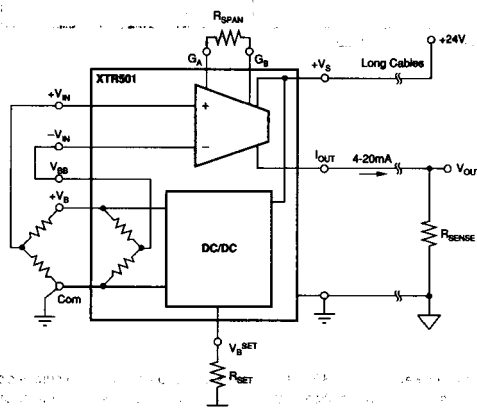
DESCRIPTION

The XTR501 contains a high efficiency DC/DC converter and 4-20mA three wire current transmitter. It provides regulated bridge excitation, optional half bridge, differential inputs and current transmitter necessary for the excitation and signal conditioning of low impedance bridge sensors and high integrity signal transmission.

The DC/DC converter is capable of supplying 1W into a regulated bridge voltage of 1.5V to 5.0V from a supply of 11.4V to 30V. The combination of a low startup current and high efficiency current step-up allows for a combined supply line resistance of up to 100Ω when exciting low impedance sensors.

The instrumentation amplifier of the current transmitter can be used over a wide range of gains, accommodating a variety of input signals and sensors.

The XTR501 is particularly suited to excitation of high current/low impedance sensors used in bridge applications allowing the use of lighter cabling leading to considerable savings on cabling costs.



International Airport Industrial Park • Mailing Address: PO Box 11400 • Tucson, AZ 85734 • Street Address: 6730 S. Tucson Blvd. • Tucson, AZ 85706
Tel: (502) 746-1111 • Twx: 910-952-1111 • Cable: BBRCORP • Telex: 066-6491 • FAX: (602) 886-1510 • Immediate Product Info: (800) 548-6132



PDS-1212

4.245