

**DM74H08(SN74H08) quad 2-input AND gate**

**DM74H11(SN74H11) triple 3-input AND gate**

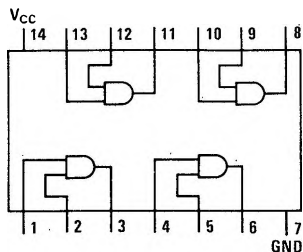
**DM74H21(SN74H21) dual 4-input AND gate**

### general description

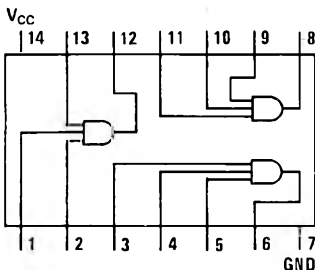
These Series 74H gates provide the non-inverting AND function with very low propagation delays. They are completely compatible with other TTL devices in the 74 and 74H series. Features include:

- Typical propagation delays less than 9 ns
- Fanout of 10 Series 74H loads or 12 Series 74 loads
- Typical DC noise margin of 1V and low susceptibility to AC noise.

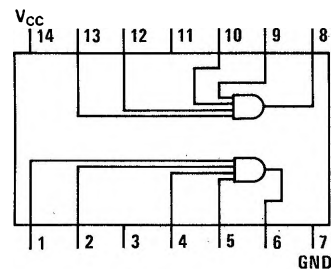
### connection diagrams



DM74H08



DM74H11



DM74H21