

CLC110

CLC110 Wideband, Closed-Loop Monolithic Buffer



Literature Number: SNOS842

CLC110

Wideband, Closed-Loop Monolithic Buffer Amplifier

General Description

Using a unique closed-loop design, the CLC110 buffer offers a high-fidelity, high-performance alternative to conventional open-loop buffers. For example, the -3dB bandwidth is 730MHz ($0.5V_{pp}$) and the settling time to 0.2% is typically only 5ns . Yet all this is achieved while maintaining excellent signal fidelity as demonstrated by the -65dBc harmonic distortion at 20MHz – a value unmatched by any high-speed buffer.

The CLC110 is an ideal choice for a wide variety of applications. With its speed and accuracy, the CLC110 offers designers the benefit of buffering signals which might otherwise go unbuffered due to performance penalties imposed by conventional buffers. For example, the CLC110 is well suited for use within closed-loop systems such as amplifier or phase locked loop systems; with its 400ps rise time, its effect on loop dynamics is usually negligible.

Ultra-fast flash A/D converter systems can also benefit from the speed of the CLC110. And, since most flash A/D's have capacitive inputs, the CLC110's dynamic performance has been characterized for various loads. In addition, the amplifier specifications are for a 100Ω load.

The CLC110 is available in several versions to meet a variety of requirements. A three-letter suffix determines the version:

CLC110AJP -40°C to $+85^\circ\text{C}$ 8-pin plastic DIP
 CLC110AJE -40°C to $+85^\circ\text{C}$ 8-pin plastic SOIC
 DESC SMD number: 5962-89975

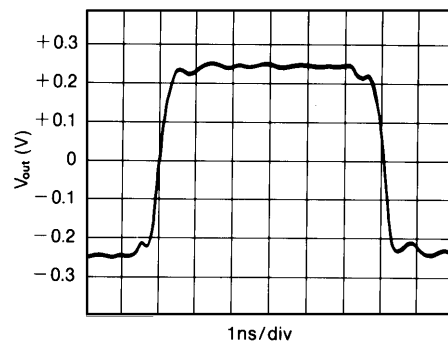
Features

- Closed-loop, unity-gain operation
- -3dB bandwidths of 730MHz ($0.5V_{pp}$)
- 0.2% settling in 5ns
- Low power, 150mW
- Low distortion, -65dBc at 20MHz

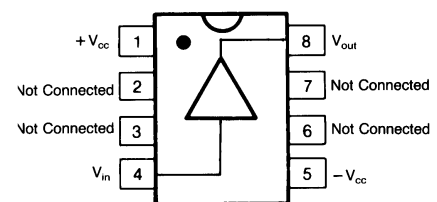
Applications

- Ultra-fast flash A/D conversion
- Line driving
- High-speed communications
- Impedance transformation
- Power buffers
- IF processors

Small Signal Pulse Response



Pinout
DIP & SOIC



CLC110 Electrical Characteristics ($V_{cc} = \pm 5V$, $R_L = 100\Omega$, $R_S = 50\Omega$; unless specified)

PARAMETERS	CONDITIONS	TYP	MIN AND MAX RATINGS			UNITS	SYMBOL
Ambient Temperature	CLC110AJ	+25°C	-40°C	+25°C	+85°C		
FREQUENCY DOMAIN PERFORMANCE¹							
-3dB bandwidth	$V_{out} < 0.5V_{pp}$	730	>400	>400	>300	MHz	SSBW
gain flatness	$V_{out} < 5V_{pp}$	90	>50	>55	>50	MHz	LSBW
peaking	$V_{out} < 0.5V_{pp}$	0	<0.8	<0.5	<0.6	dB	GFPH
rolloff	DC to 200MHz	0	<1.0	<0.8	<1.2	dB	GFRH
group delay	DC to 200MHz	0.75	<1.0	<1.0	<1.2	ns	GD
linear phase deviation	DC to 200MHz	0.7	<1.5	<1.5	<2.0	°	LPD
TIME DOMAIN PERFORMANCE¹							
rise and fall time (input signal rise/fall = 300ps)	0.5V step	0.4	<1.0	<1.0	<1.4	ns	TRS
overshoot (input signal rise/fall = 300ps)	0.5V step	0	<15	<10	<15	%	OS
rise and fall time (input signal rise/fall \leq 1ns)	5V step	4.5	<8.5	<7.5	<8.5	ns	TRL
settling time to $\pm 0.2\%$	2V step	5	<10	<10	<10	ns	TSP
slew rate		800	>450	>500	>450	V/ μ s	SR
DISTORTION AND NOISE PERFORMANCE							
2nd harmonic distortion	$2V_{pp}$, 20MHz	-65	<-48	<-55	<-55	dBc	HD2
	$2V_{pp}$, 50MHz	-60	<-48	<-55	<-55	dBc	HHD2
3rd harmonic distortion	$2V_{pp}$, 20MHz	-65	<-55	<-55	<-55	dBc	HD3
	$2V_{pp}$, 50MHz	-60	<-50	<-50	<-45	dBc	HHD3
equivalent input noise							
noise floor	> 1MHz	-158	<-155	<-155	<-154	dBm(1Hz)	SNF
integrated noise	1MHz to 200MHz	40	<57	<57	<63	μ V	INV
STATIC, DC PERFORMANCE							
small signal gain into 100 Ω load		0.97	>0.95	>0.96	>0.95	V/V	GA
integral endpoint linearity	$\pm 2V$ full scale	0.2	<0.8	<0.4	<0.3	%FS	ILIN
* output offset voltage		2	<16	<8.0	<13	mV	VIO
average temperature coefficient		20	<100	—	<50	μ V/ $^{\circ}$ C	DVIO
* input bias current		20	<100	<50	<50	μ A	IBN
average temperature coefficient		200	<700	—	<300	nA/ $^{\circ}$ C	DIBN
power supply rejection ratio		50	>45	>45	>45	dB	PSRR
* supply current	no load	15	<20	<20	<20	mA	ICC
MISCELLANEOUS PERFORMANCE							
input resistance		160	>50	>100	>200	k Ω	RIN
capacitance		1.6	<2.5	<2.2	<2.5	pF	CIN
output impedance	at DC	2	<3.5	<3.0	<3.5	Ω	RO
output voltage range	100 Ω load	± 4	> ± 3.0	> ± 3.2	> ± 3.2	V	VO
output current		± 70	> ± 45	> ± 50	> ± 50	mA	IO

Min/max ratings are based on product characterization and simulation. Individual parameters are tested as noted. Outgoing quality levels are determined from tested parameters.

Absolute Maximum Ratings

Miscellaneous Ratings

V_{cc}	$\pm 7V$
I_{out}	output is short circuit protected to ground, but, maximum reliability will be obtained if I_{out} does not exceed...
input voltage	70mA
junction temperature	$\pm V_{cc}$
operating temperature range	+150°C
AI:	-40°C to +85°C
storage temperature range	-65°C to +150°C
lead solder duration (+300°C)	10 sec

Notes:

- * AJ 100% tested at +25°C.
- note 1: AC performance is very dependent on layout. Specifications apply only in a 50 Ω microstrip environment.

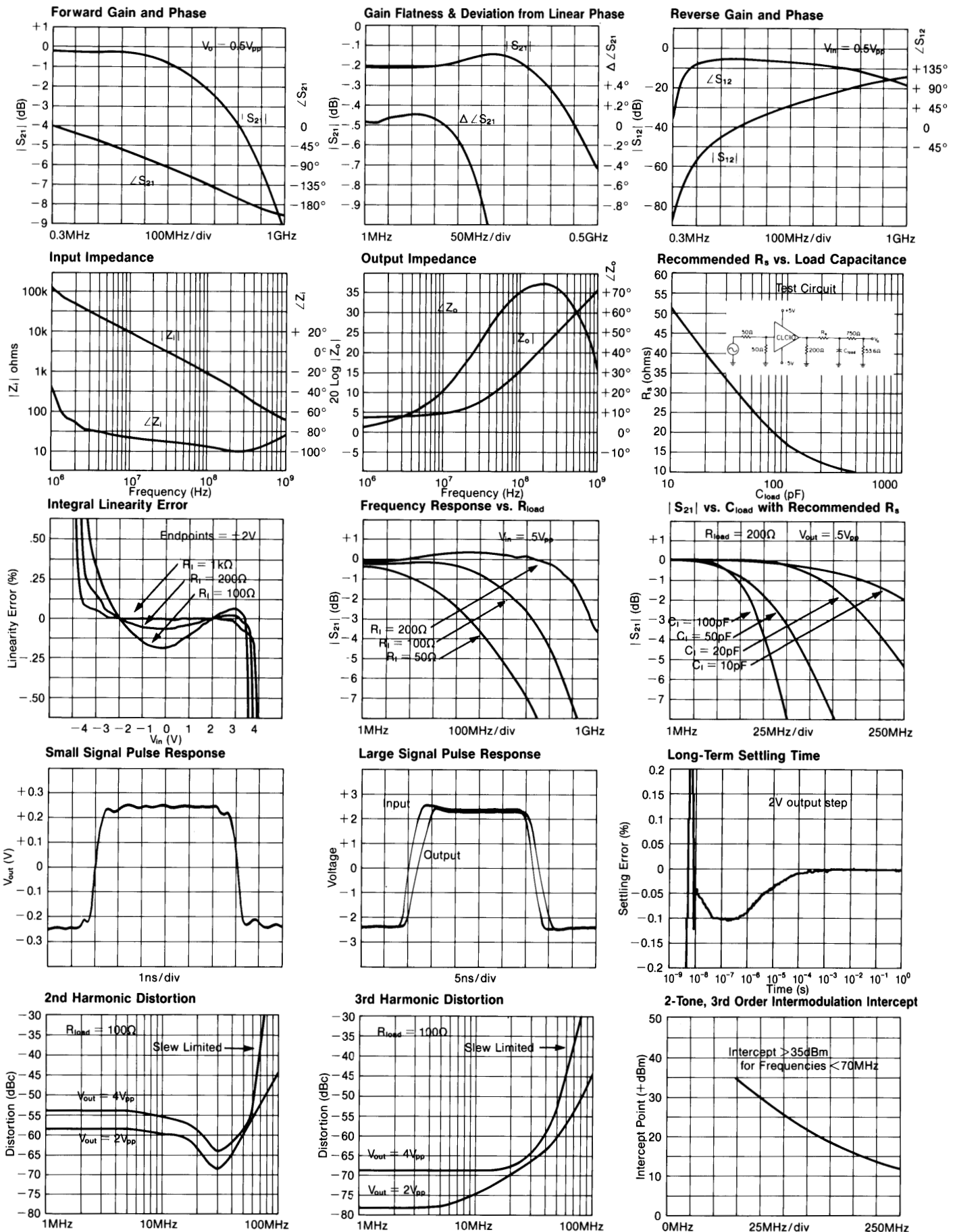
Package Thermal Resistance

Package	θ_{JC}	θ_{JA}
Plastic (AJP)	65°C/W	115°C/W
Surface Mount (AJE)	55°C/W	125°C/W

Reliability Information

Transistor Count | 21

CLC110 Typical Performance Characteristics ($V_{CC} = \pm 5V$, $R_L = 100\Omega$, $R_S = 50\Omega$; unless specified)



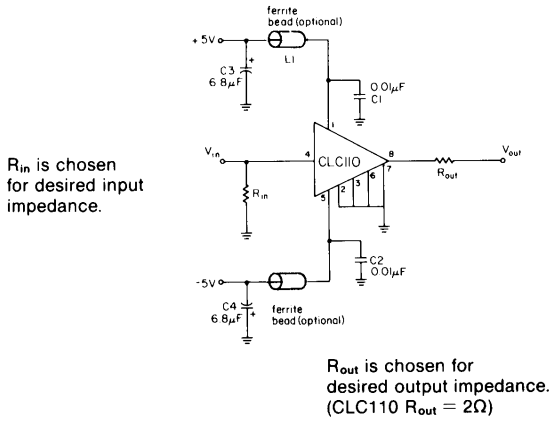


Figure 1: recommended circuit and evaluation board schematic

Operation

The CLC110 is based upon a unique, patented closed-loop design, which provides the accuracy characteristics of a closed-loop amplifier, yet also has unmatched dynamic performance.

Printed Circuit Layout and Supply Bypassing

As with any high-frequency device, a good PCB layout is required for optimum performance. This is especially important for a device as fast as the CLC110, which has a typical bandwidth of 730MHz.

To minimize capacitive feedthrough, the pins not connected internally (pins 2, 3, 6, and 7) should be connected to the ground plane. Input and output traces should be laid out as transmission lines with the appropriate termination resistors very near the CLC110. On a 0.065 inch epoxy PCB material, a 50Ω transmission line (commonly called stripline) can be constructed by using a trace width of 0.1" over a complete ground plane.

Figure 1 shows recommended power supply bypassing. The ferrite beads are optional and are recommended only where additional isolation is needed from high-frequency (>400MHz) resonances of the power supply.

Parasitic or load capacitance directly on the output of the CLC110 will introduce additional phase shift in the device, which can lead to decreased phase margin and frequency response peaking. A small series resistor before the capacitance effectively decouples this effect. The graphs on the preceding page illustrate the required resistor value and the resulting performance vs. capacitance.

Precision buffered resistors (PRP8351 series from Precision Resistive Products), which have low parasitic reactances, were used to develop the data sheet specifications. Precision carbon composition resistors or standard spirally-trimmed RN55D metal film resistors will work, though they will cause a degradation of AC performance due to their reactive nature at high frequencies.

Evaluation Board

An evaluation board (part CLC730012) is available for the CLC110 to assist in the evaluation of the CLC110. It may also be used as a guide in developing a printed circuit layout. Figure 1 shows the board's schematic; Figures 2 through 4 show the board layout.

Evaluation Board Parts List:

- R_{in} select for desired input impedance
- R_{out} select for desired output impedance
- C_1, C_2 0.1µF ceramic radial lead
- C_3, C_4 6.8µF (Sprague 150D series)
- L_1, L_2 ferrite beads (optional) (Ferroxcube #VK 200 19/4B)

Hardware (optional)

- SocketsCambion flush-mount connector jacks (#450-2598-01-06-00)
- SMA Connectors (female)
 - Amphenol 901-144 (straight)
 - Amphenol 901-143 (angled)

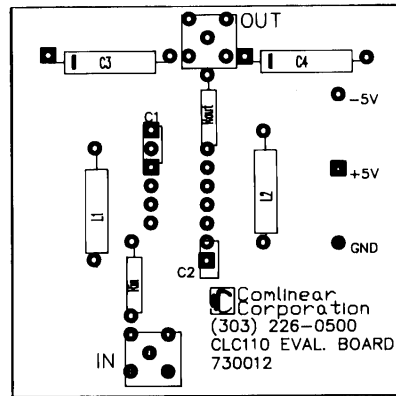


Figure 2: component placement guide

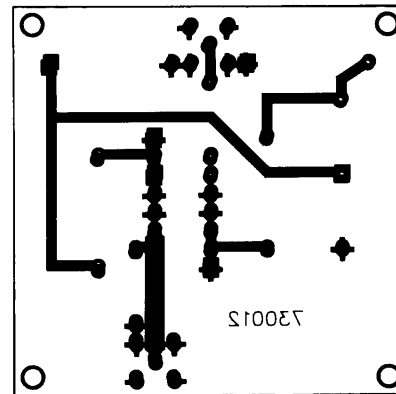


Figure 3: solder side (bottom) as viewed from component side (top)

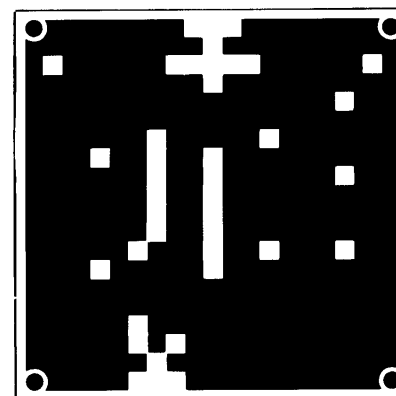


Figure 4: component side (top) showing extensive ground plane

This page intentionally left blank.

Customer Design Applications Support

National Semiconductor is committed to design excellence. For sales, literature and technical support, call the National Semiconductor Customer Response Group at **1-800-272-9959** or fax **1-800-737-7018**.

Life Support Policy

National's products are not authorized for use as critical components in life support devices or systems without the express written approval of the president of National Semiconductor Corporation. As used herein:

1. Life support devices or systems are devices or systems which, a) are intended for surgical implant into the body, or b) support or sustain life, and whose failure to perform, when properly used in accordance with instructions for use provided in the labeling, can be reasonably expected to result in a significant injury to the user.
2. A critical component is any component of a life support device or system whose failure to perform can be reasonably expected to cause the failure of the life support device or system, or to affect its safety or effectiveness.



National Semiconductor Corporation

1111 West Bardin Road
Arlington, TX 76017
Tel: 1(800) 272-9959
Fax: 1(800) 737-7018

National Semiconductor Europe

Fax: (+49) 0-180-530 85 86
E-mail: europe.support.nsc.com
Deutsch Tel: (+49) 0-180-530 85 85
English Tel: (+49) 0-180-532 78 32
Francais Tel: (+49) 0-180-532 93 58
Italiano Tel: (+49) 0-180-534 16 80

National Semiconductor Hong Kong Ltd.

2501 Miramar Tower
1-23 Kimberley Road
Tsimshatsui, Kowloon
Hong Kong
Tel: (852) 2737-1600
Fax: (852) 2736-9960

National Semiconductor Japan Ltd.

Tel: 81-043-299-2309
Fax: 81-043-299-2408

National does not assume any responsibility for use of any circuitry described, no circuit patent licenses are implied and National reserves the right at any time without notice to change said circuitry and specifications.

IMPORTANT NOTICE

Texas Instruments Incorporated and its subsidiaries (TI) reserve the right to make corrections, modifications, enhancements, improvements, and other changes to its products and services at any time and to discontinue any product or service without notice. Customers should obtain the latest relevant information before placing orders and should verify that such information is current and complete. All products are sold subject to TI's terms and conditions of sale supplied at the time of order acknowledgment.

TI warrants performance of its hardware products to the specifications applicable at the time of sale in accordance with TI's standard warranty. Testing and other quality control techniques are used to the extent TI deems necessary to support this warranty. Except where mandated by government requirements, testing of all parameters of each product is not necessarily performed.

TI assumes no liability for applications assistance or customer product design. Customers are responsible for their products and applications using TI components. To minimize the risks associated with customer products and applications, customers should provide adequate design and operating safeguards.

TI does not warrant or represent that any license, either express or implied, is granted under any TI patent right, copyright, mask work right, or other TI intellectual property right relating to any combination, machine, or process in which TI products or services are used. Information published by TI regarding third-party products or services does not constitute a license from TI to use such products or services or a warranty or endorsement thereof. Use of such information may require a license from a third party under the patents or other intellectual property of the third party, or a license from TI under the patents or other intellectual property of TI.

Reproduction of TI information in TI data books or data sheets is permissible only if reproduction is without alteration and is accompanied by all associated warranties, conditions, limitations, and notices. Reproduction of this information with alteration is an unfair and deceptive business practice. TI is not responsible or liable for such altered documentation. Information of third parties may be subject to additional restrictions.

Resale of TI products or services with statements different from or beyond the parameters stated by TI for that product or service voids all express and any implied warranties for the associated TI product or service and is an unfair and deceptive business practice. TI is not responsible or liable for any such statements.

TI products are not authorized for use in safety-critical applications (such as life support) where a failure of the TI product would reasonably be expected to cause severe personal injury or death, unless officers of the parties have executed an agreement specifically governing such use. Buyers represent that they have all necessary expertise in the safety and regulatory ramifications of their applications, and acknowledge and agree that they are solely responsible for all legal, regulatory and safety-related requirements concerning their products and any use of TI products in such safety-critical applications, notwithstanding any applications-related information or support that may be provided by TI. Further, Buyers must fully indemnify TI and its representatives against any damages arising out of the use of TI products in such safety-critical applications.

TI products are neither designed nor intended for use in military/aerospace applications or environments unless the TI products are specifically designated by TI as military-grade or "enhanced plastic." Only products designated by TI as military-grade meet military specifications. Buyers acknowledge and agree that any such use of TI products which TI has not designated as military-grade is solely at the Buyer's risk, and that they are solely responsible for compliance with all legal and regulatory requirements in connection with such use.

TI products are neither designed nor intended for use in automotive applications or environments unless the specific TI products are designated by TI as compliant with ISO/TS 16949 requirements. Buyers acknowledge and agree that, if they use any non-designated products in automotive applications, TI will not be responsible for any failure to meet such requirements.

Following are URLs where you can obtain information on other Texas Instruments products and application solutions:

Products

Audio	www.ti.com/audio
Amplifiers	amplifier.ti.com
Data Converters	dataconverter.ti.com
DLP® Products	www.dlp.com
DSP	dsp.ti.com
Clocks and Timers	www.ti.com/clocks
Interface	interface.ti.com
Logic	logic.ti.com
Power Mgmt	power.ti.com
Microcontrollers	microcontroller.ti.com
RFID	www.ti-rfid.com
OMAP Mobile Processors	www.ti.com/omap
Wireless Connectivity	www.ti.com/wirelessconnectivity

Applications

Communications and Telecom	www.ti.com/communications
Computers and Peripherals	www.ti.com/computers
Consumer Electronics	www.ti.com/consumer-apps
Energy and Lighting	www.ti.com/energy
Industrial	www.ti.com/industrial
Medical	www.ti.com/medical
Security	www.ti.com/security
Space, Avionics and Defense	www.ti.com/space-avionics-defense
Transportation and Automotive	www.ti.com/automotive
Video and Imaging	www.ti.com/video

TI E2E Community Home Page

e2e.ti.com

Mailing Address: Texas Instruments, Post Office Box 655303, Dallas, Texas 75265
Copyright © 2011, Texas Instruments Incorporated