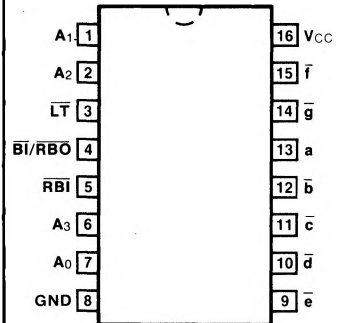


54LS/74LS247

BCD TO 7-SEGMENT DECODER/DRIVER (With Open-Collector Outputs)

CONNECTION DIAGRAM PINOUT A

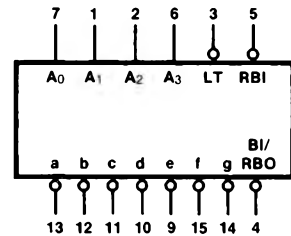


DESCRIPTION — The 'LS247 has active LOW open-collector outputs guaranteed to sink 12 mA (Military) or 24 mA (Commercial). It has the same electrical characteristics and pin connections as the 'LS47. The only difference is that the 'LS247 will light the top bar (segment a) for numeral 6 and the bottom bar (segment d) for numeral 9. For detailed description and specifications please refer to the 'LS47 data sheet.

ORDERING CODE: See Section 9

| PKGS | PIN OUT | COMMERCIAL GRADE | MILITARY GRADE | PKG TYPE |
|-----------------|---------|--|--|----------|
| | | V _{CC} = +5.0 V ±5%, T _A = 0°C to +70°C | V _{CC} = +5.0 V ±10%, T _A = -55°C to +125°C | |
| Plastic DIP (P) | A | 74LS247PC | | 9B |
| Ceramic DIP (D) | A | 74LS247DC | 54LS247DM | 6B |
| Flatpak (F) | A | 74LS247FC | 54LS247FM | 4L |

LOGIC SYMBOL



V_{CC} = Pin 16
GND = Pin 8

INPUT LOADING/FAN-OUT: See Section 3 for U.L. definitions

| PIN NAMES | DESCRIPTION | 54/74LS (U.L.) HIGH/LOW |
|---------------------------------|--|-------------------------------|
| A ₀ — A ₃ | BCD Inputs | 0.5/0.25 |
| <u>RBI</u> | Ripple Blanking Input (Active LOW) | 0.5/0.25 |
| <u>LT</u> | Lamp Test Input (Active LOW) | 0.5/0.25 |
| <u>BI/RBO</u> | Blanking Input (Active LOW) Ripple Blanking Output (Active LOW) | 0.5/0.25 1.25/2.0 (1.0) |
| <u>a</u> — <u>g</u> | Segment Outputs (Active LOW) | OC*/15 (7.5) |

*OC — Open Collector