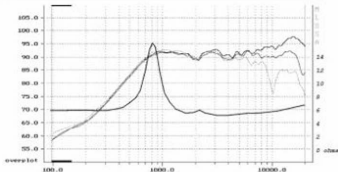
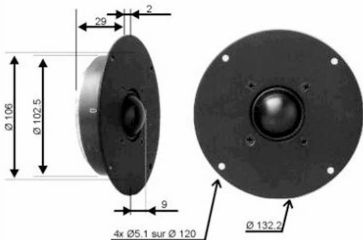


Ce dome souple textile imprégné répond aux exigences les plus sévères des studios professionnels et monitoring.



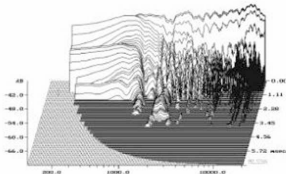
Impédance 8 ohms
 Résonance 800 Hz
 Puissance nominale (IEC) . 70 W
 Sensibilité (2.83V/1m) 93.0 dB

Diamètre bobine..... 34 mm
 Hauteur bobine..... 2.5 mm
 Support aluminium
 Nb. couches 1

Résistance (DC) 5.3 ohms
 Inductance 0.006 mH
 Xmax ± 0.25 mm

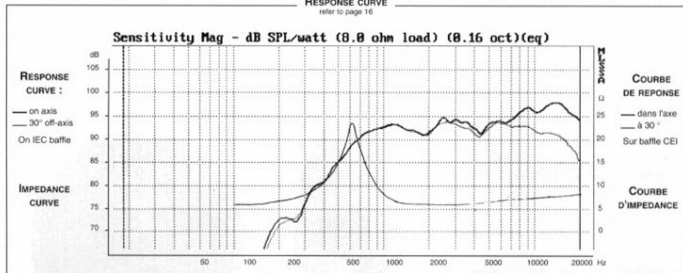
Membrane ... textile imprégné
 Saladier aluminium
 Poids 1.18 kg

Equipage mobile remplaçable : RW034X0



RESPONSE CURVE

refer to page 16



SPECIFICATIONS

Technical Characteristics	Symbol	Value	Units
---------------------------	--------	-------	-------

PRIMARY APPLICATION

Nominal Impedance	Z	8	Ω
Resonance Frequency	Fs	800	Hz
Nominal Power Handling	P	70	W
Sensitivity	E	93	dB

VOICE COIL

Voice coil diameter	\varnothing	34	mm
Minimum Impedance	Zmin	6,5	Ω
DC Resistance	Re	5,3	Ω
Voice Coil Inductance	Lbm	6	μ H
Voice coil Length	h	2,5	mm
Former	-	Aluminium	-
Number of layers	n	1	-

MAGNET

Magnet dimensions	\varnothing x h	100 x 18	mm
Magnet weight	m	0,55	kg
Flux density	B	1,5	T
Force factor	BL	3,5	NA'
Height of magnetic gap	He	3	mm
Stray flux	Fmag	150	Am ²
Linear excursion	Xmax	$\pm 0,25$	mm

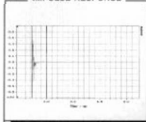
PARAMETERS

Suspension Compliance	Cms	-	mN ⁻¹
Mechanical Q Factor	Qms	-	-
Electrical Q Factor	Qes	-	-
Total Q Factor	Qts	-	-
Mechanical Resistance	Rms	-	kg s ⁻¹
Moving Mass	Mms	$0,50 \cdot 10^{-3}$	kg
Effective Piston Area	S	$10,8 \cdot 10^{-4}$	m ²
Volume Equivalent of Air at Cas	Vas	-	m ³
Mass of speaker	M	1,18	kg

APPLICATION PARAMETERS

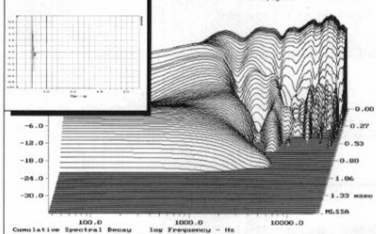
Fc	Crossover Frequency	Hz
S	Slope	dB / Oct.
L	Self-inductance	mH
C	Capacitor	μ F
P	Nominal Power Handling	W

IMPULSE RESPONSE



WATERFALL

refer to page 16



SUGGESTED APPLICATIONS

refer to page 8 to 13

