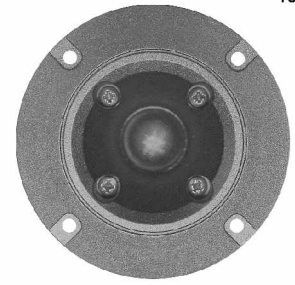
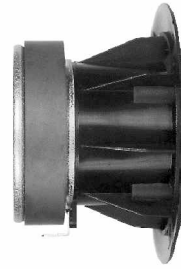


## TWEETER

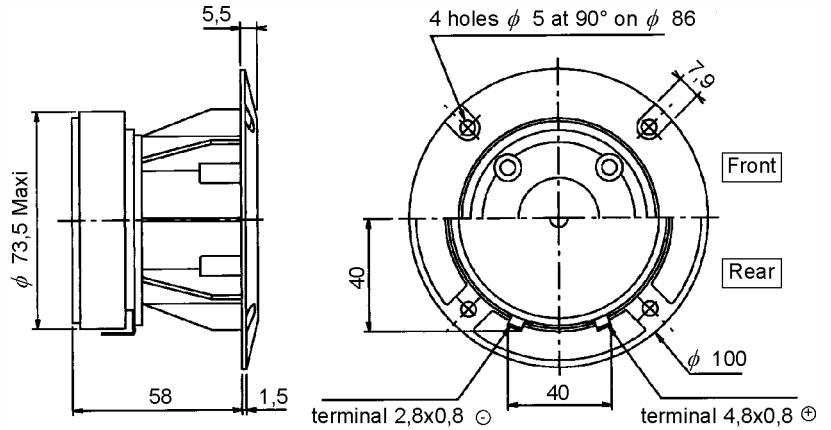
101484R

July 98

### High Efficiency 1" Dome Horn Loaded . Textile 8Ω

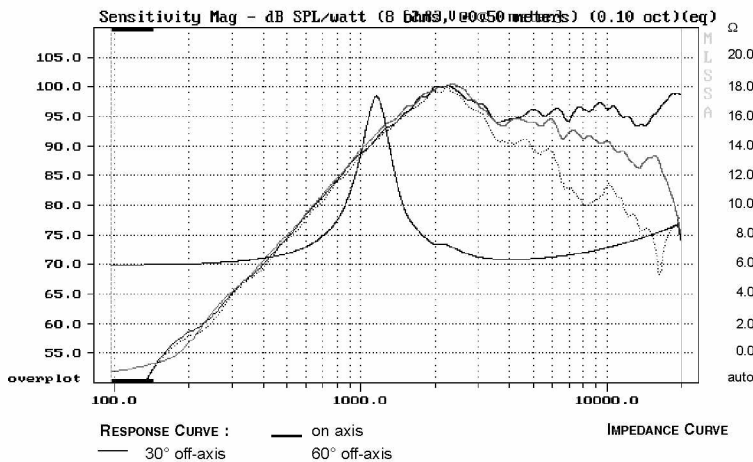


- 1" - horn loaded soft dome - 25 mm
- Very high efficiency (96 dB)
- Catenary Profile
- 1" laminate textile dome
- High impact polyamide horn
- Replacable diaphragm
- Ferrofluid cooled voice coil (new generation - 250 cps)

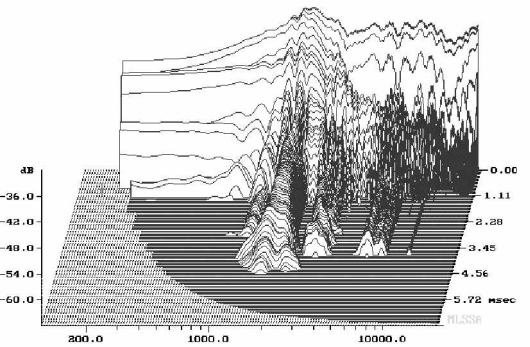


All dimensions in mm

## Response Curve



## Waterfall



Cumulative Spectral Decay Log Frequency - Hz

## SPECIFICATIONS

Technical characteristics	Symbol	Value	Units
<b>PRIMARY APPLICATION</b>			
Nominal Impedance	Z	8	$\Omega$
Resonance Frequency	Fs	1170	Hz
Nominal Power Handling	P	70	W
Sensitivity	E	96	dB
<b>VOICE COIL</b>			
Voice Coil Diameter	$\phi$	25	mm
Minimum Impedance	Zmin	6,5	$\Omega$
DC Resistance	Re	5,5	$\Omega$
Voice Coil Inductance	Lbm	11	mH
Voice Coil Length	h	1,6	mm
Former	-	Aluminium	-
Number of Layers	n	2	-

## MAGNET

Magnet Dimensions	$\phi$ x h	72 x 15	mm
Magnet Weight	m	0,24	kg
Flux Density	B	1,5	T
Force Factor	BL	2,9	NA <sup>-1</sup>
Height of Magnetic Gap	He	3	mm
Stray Flux	Fmag	-	Am <sup>-1</sup>
Linear Excursion	Xmax	$\pm$ 0,7	mm

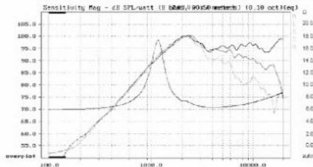
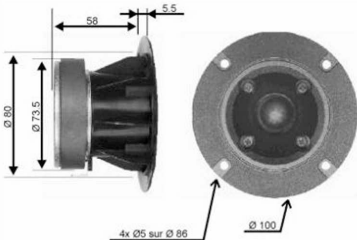
## PARAMETERS

Suspension Compliance	Cms	-	mN <sup>-1</sup>
Mechanical Q Factor	Qms	-	-
Electrical Q Factor	Qes	-	-
Total Q Factor	Qts	-	-
Mechanical Resistance	Rms	-	kg s <sup>-1</sup>
Moving Mass	Mms	0,29.10 <sup>-3</sup>	kg
Effective Piston Area	S	6,2.10 <sup>-4</sup>	m <sup>2</sup>
Volume Equivalent of Air at Cas	Vas	-	m <sup>3</sup>
Mass of Speaker	M	0,50	kg

## Suggested Applications

Crossover Frequency	Slope	Inductance	Capacitor	Power Handling
Hz	dB / Oct.	mH	$\mu$ F	W
5200	6	-	4,7	50
2800	12	0,47	6,8	70

Le dôme textile monté en pavillon et la bobine refroidie par "ferrofluid" permettent d'obtenir un rendement très élevé et une forte puissance



Impédance ..... 8 ohms      Diamètre bobine..... 25 mm  
 Résonance ..... 1170 Hz      Hauteur bobine..... 1.6 mm  
 Puissance nominale (IEC) . 70 W      Support ..... aluminium  
 Sensibilité (2.83V/1m) .... 96.0 dB      Nb. couches ..... 2

Résistance (DC) ..... 5.5 ohms      Membrane ..... textile  
 Inductance ..... 11 mH      Saladier ..... polyamide  
 Xmax ..... ± 0.7 mm      Poids ..... 500 gr

Bobine refroidie par "ferrofluid"

Bobine de remplacement : RP125T1

